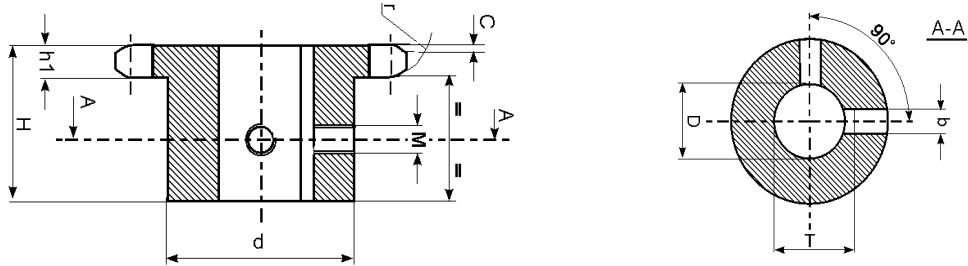


Finished bore Sprockets

With induction hardened teeth

Keyway is located on center line of tooth



Keyway dimensions according to different bore diameter:

D(H7)	B(H9)	T	M
10	4	D + 1,8 (+0,1 / 0)	M3
11	4	D + 1,8 (+0,1 / 0)	M3
12	4	D + 1,8 (+0,1 / 0)	M3
14	5	D + 2,3 (+0,1 / 0)	M4
16	5	D + 2,3 (+0,1 / 0)	M4
18	6	D + 2,8 (+0,1 / 0)	M5
19	6	D + 2,8 (+0,1 / 0)	M5
20	6	D + 2,8 (+0,1 / 0)	M5
22	6	D + 2,8 (+0,1 / 0)	M5
24	8	D + 3,3 (+0,2 / 0)	M6
25	8	D + 3,3 (+0,2 / 0)	M6
28	8	D + 3,3 (+0,2 / 0)	M6
30	8	D + 3,3 (+0,2 / 0)	M6
32	10	D + 3,3 (+0,2 / 0)	M8
35	10	D + 3,3 (+0,2 / 0)	M8
38	10	D + 3,3 (+0,2 / 0)	M8
40	12	D + 3,3 (+0,2 / 0)	M10
42	12	D + 3,3 (+0,2 / 0)	M10
45	14	D + 3,8 (+0,2 / 0)	M12
48	14	D + 3,8 (+0,2 / 0)	M12
50	14	D + 3,8 (+0,2 / 0)	M12
60	18	D + 4,4 (+0,2 / 0)	M12
65	18	D + 4,4 (+0,2 / 0)	M12
70	20	D + 4,4 (+0,2 / 0)	M12

Finished bore Sprockets

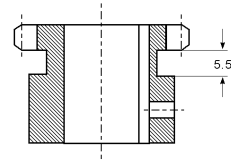
3/8" x 7/32"

ISO 06B - 1 9,525 X 5,72mm

Chain : Pitch : 9,525mm
Internal width : 5,72mm
Roller dia. : 6.35mm

Version fo size with *

Sprocket : Tooth radius r : 10mm
Radius width C : 1mm
Tooth width h1 : 5,3mm



Dimension for b,T,M - See forepage b,T,M

Z	D	H	d
10	10	22	24*
	11		26*
	12		29*
	14		31*
11	10	25	24
	12		26*
	14		29*
	15		30*
	16		31*
12	10	25	25
	12		26
	14		29*
	15		30*
	16		31*
13	10	25	28
	12		29
	14		30
	15		31*
	16		35*
	18		
14	12	25	31
	14		
	15		
	18		35*
15	12	25	34
	14		
	15		
	16		
	18		35
	19		36
	20		38*
	22		42*
16	12	28	37
	14		
	15		
	16		
	18		
	19		
	20		
22			

Z	D	H	d
16	24	28	42*
	25		
17	12	28	40
	14		
	15		
	16		
	18		
	19		
	20		
	22		
18	12	28	43
	14		
	15		
	16		
19	12	28	45
	14		
	15		
	16		
	18		
	19		
	20		
	22		
	24		
	25		
20	12	28	46
	14		
	15		
	16		
	18		
	19		
	20		
21	15	28	48
	16		

Z	D	H	d
21	18	28	48
	19		
	20		
	22		
	24		
22	15	28	50
	16		
	18		
	19		
	20		
	22		
23	15	28	52
	16		
	18		
	19		
	20		
	22		
	24		
24	15	28	54
	16		
	18		
	19		
	20		
	22		
25	16	28	57
	18		
	19		
	20		
	22		
	24		
30	20	30	60
	22		
	24		
	25		
	28		

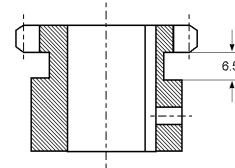
Finished bore Sprockets
1/2" x 5/16"

ISO 08B - 1 12,7 x 7.75mm

Chain : Pitch : 12,7mm
Internal width : 7,8mm
Roller dia. : 8,5mm

Sprocket : Tooth radius r : 13mm
Radius width C : 1,3mm
Tooth width h1 : 7,2mm

Version fo size with *



Dimension for b,T,M - See forepage b,T,M

Z	D	H	d
10	12	25	26
	14		29*
	15		30*
	16		31*
11	12	25	29
	14		30
	15		31
	16		34*
12	12	28	33
	14		35
	15		36
	16		38*
13	12	28	37
	14		42*
	15		45*
	16		41
14	12	28	41
	14		45*
	15		45*
	16		45*
15	12	28	45
	14		45

Z	D	H	d
15	15	28	45
	16		
	18		
	19		
	20		
	22		
	24		
	25		
	28		
	30		
16	15	28	50
	16		
	18		
	19		
	20		
	22		
	24		
	25		
	28		
	30		
17	15	28	52
	16		
	18		
	19		
	20		
	22		
	24		
	25		
	28		
	30		
18	15	28	56
	16		
	18		
	19		
	20		
	22		
	24		
	25		
	28		
	30		

Z	D	H	d
18	38	28	56
	16		
	18		
	19		
	20		
	22		
	24		
	25		
	28		
	30		
19	16	28	60
	18		
	19		
	20		
	22		
	24		
	25		
	28		
	30		
	32		
20	16	28	64
	18		
	19		
	20		
	22		
	24		
	25		
	28		
	30		
	32		
21	16	28	68
	18		
	19		
	20		
	22		
	24		
	25		
	28		
	30		
	32		
22	16	28	70
	18		
	19		
	20		
	22		
	24		
	25		
	28		
	30		
	32		

Z	D	H	d
22	28	28	70
	30		
	32		
	35		
	38		
	19		
23	19	28	70
	20		
	22		
	24		
	25		
	28		
24	19	28	70
	20		
	22		
	24		
	25		
	28		
25	19	28	70
	20		
	22		
	24		
	25		
	28		
30	25	30	80
	30		
	32		
	35		
	38		
	38		



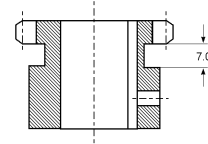
Finished bore Sprockets
5/8" x 3/8"

ISO 10B - 1 15,875 x 9,65mm

Chain : Pitch : 15,875mm
Internal width : 9,7mm
Roller dia. : 10mm

Version fo size with *

Sprocket : Tooth radius r : 16mm
Radius width C : 1,6mm
Tooth width h1 : 9,1mm



Dimension for b,T,M - See forepage b,T,M

Z	D	H	d
10	15	25	35
	16		
	19		
	20		
	24		
11	15	30	37
	16		
	18		
	19		
	20		
	24		42*
	25		
	28		
	30		
12	15	30	42
	16		
	18		
	19		
	20		
	22		
	24		
	25		44
	28		47*
	30		49*
	32		51*
13	15	30	47
	16		
	18		
	19		
	20		
	22		
	24		
	25		
	28		49
	30		51
14	15	30	52
	16		
	18		
	19		
	20		
	22		
	24		
	25		

Z	D	H	d
14	28	30	52
	30		
	32		
15	19	30	57
	20		
	22		
	24		
	25		
	28		
	30		
	32		
	35		
	16		
20			
22			
24			
25			
28			
30			
32			
17	19	30	60
	20		
	22		
	24		
	25		
	28		
	30		
	32		
	35		
	38		
18	19	30	70
	20		
	22		
	24		
	25		
	28		
	30		
	32		
	35		
	38		
	40		
	42		

Z	D	H	d
19	19	30	70
	20		
	22		
	24		
	25		
	28		
	30		
	32		
	35		
	38		
	40		
	42		
20	19	30	75
	20		
	22		
	24		
	25		
	28		
	30		
	32		
	35		
	38		
	40		
	42		
21	19	30	75
	20		
	22		
	24		
	25		
	28		
	30		
	32		
	35		
	38		
	40		
	42		
22	19	30	80
	20		
	22		
	24		
	25		
	28		
	30		
	32		

Z	D	H	d
22	35	30	80
	38		
	40		
	42		
	42		
23	19	30	80
	20		
	22		
	24		
	25		
	28		
	30		
	32		
	35		
	38		
	40		
	42		
24	19	30	80
	20		
	22		
	24		
	25		
	28		
	30		
	32		
	35		
	38		
	40		
	42		
25	19	30	80
	20		
	22		
	24		
	25		
	28		
	30		
	32		
	35		
	38		
	40		
	42		



Finished bore Sprockets

3/4" x 7/16"

ISO 12B - 1 19,05 x 11,68mm

Chain : Pitch : 19,05mm
Internal width : 11,68mm
Roller dia. : 12,07mm

Sprocket : Tooth radius r : 19mm
Radius width C : 2mm
Tooth width h1 : 11,1mm

Dimension for b,T,M - See forepage b,T,M

Z	D	H	d
10	19	30	42
	20		
	24		
	25		
	28		
	30		
	32		
11	19	35	46
	20		
	24		
	25		
	28		
	30		
	32		
12	19	35	52
	20		
	22		
	24		
	25		
	28		
	30		
	32		
13	19	35	58
	20		
	22		
	24		
	25		
	28		
	30		
	32		
14	19	35	64
	20		
	22		
	24		
	25		
	28		
	30		

Z	D	H	d			
14	32	35	64			
	35					
	38					
	40					
	67					
15	19	35	70			
	20					
	22					
	24					
	25					
	28					
	30					
	32					
	35					
	38					
	40					
	16			19	35	75
20						
22						
24						
25						
28						
30						
32						
35						
38						
40						
17		25	35	80		
	28					
	30					
	32					
	35					
	38					
	40					
	42					
	18	25			35	80
		28				
30						
32						
35						
38						

Z	D	H	d
18	40	35	80
	42		
19	25	35	80
	28		
	30		
	32		
	35		
	38		
	40		
	42		
	45		
	48		
20	25	35	80
	28		
	30		
	32		
	35		
	38		
	40		
	42		
	45		
	48		
21	25	40	90
	28		
	30		
	32		
	35		
	38		
	40		
	42		
	45		
	48		
22	25	40	90
	28		
	30		
	32		
	35		
	38		

Z	D	H	d
22	38	40	90
	40		
	42		
	45		
	48		
	50		
23	25	40	90
	28		
	30		
	32		
	35		
	38		
	40		
	42		
	45		
	48		
24	25	40	90
	28		
	30		
	32		
	35		
	38		
	40		
	42		
	45		
	48		
25	25	40	90
	28		
	30		
	32		
	35		
	38		
	40		
	42		
	45		
	48		



Finished bore Sprockets
1" x 17,02mm

ISO 16B - 1 25,04 x 17,02mm

Chain : Pitch : 25,4mm
Internal width : 17,02mm
Roller dia. : 15,88mm

Sprocket : Tooth radius r : 26mm
Radius width C : 2,5mm
Tooth width h1 : 16,2mm

Dimension for b,T,M - See forepage b,T,M

Z	D	H	d
11	25	40	61
	28		
	30		
	32		
	35		
	38		
	40		
	42		
12	25	40	69
	28		
	30		
	32		
	35		
	38		
	40		
13	25	40	78
	28		
	30		
	32		
	35		
	38		
	40		
	42		
	45		
	48		
50			
14	25	40	84
	28		
	30		
	32		
	35		
	38		
	40		
	42		
	45		
	48		
50			
15	25	40	92
	28		

Z	D	H	d
15	30	40	92
	32		
	35		
	38		
	40		
	42		
	45		
	48		
	50		
	16		
28			
30			
32			
35			
38			
40			
42			
45			
48			
17	25	45	100
	28		
	30		
	32		
	35		
	38		
	40		
	42		
	45		
	48		
18	25	45	100
	28		
	30		
	32		
	35		
	38		
	40		
	42		
	45		
	48		

Z	D	H	d
18	48	45	100
	50		
19	25	45	100
	28		
	30		
	32		
	35		
	38		
	40		
	42		
	45		
	48		
20	25	45	100
	28		
	30		
	32		
	35		
	38		
	40		
	42		
	45		
	48		
21	25	50	110
	28		
	30		
	32		
	35		
	38		
	40		
	42		
	45		
	48		
22	25	50	110
	28		
	30		
	32		
	35		

Z	D	H	d
22	38	50	110
	40		
	42		
	45		
	48		
23	25	50	110
	28		
	30		
	32		
	35		
	38		
	40		
	42		
	45		
	48		
24	25	50	110
	28		
	30		
	32		
	35		
	38		
	40		
	42		
	45		
	48		
25	25	50	110
	28		
	30		
	32		
	35		
	38		
	40		
	42		
	45		
	48		



Finished bore Sprockets

1" 1/4 x 3/4"

ISO 20B - 1 31,75 x 19,56mm

Chain : Pitch : 31,75mm
 Internal width : 19,56mm
 Roller dia. : 19,05mm

Sprocket : Tooth radius r : 32mm
 Radius width C : 3,5mm
 Tooth width h1 : 18,5mm

Dimension for b,T,M - See forepage b,T,M

Z	D	H	d
9	25	40	63
	30		
	32		
	35		
	38		
10	25	40	70
	30		
	32		
	35		
	38		
11	25	45	77
	28		
	30		
	32		
	35		
	38		
	40		
	42		
	45		82
	50		
60	93		
12	25	45	88
	28		
	30		
	32		
	35		
	38		
	40		
	42		
	45		
	48		
	50		
60	93		
13	25	45	98
	28		
	30		

Z	D	H	d
13	32	45	98
	35		
	38		
	40		
	42		
	45		
	48		
14	32	45	108
	35		
	38		
	40		
	42		
	45		
	48		
	50		
60			
15	32	45	118
	35		
	38		
	40		
	42		
	45		
	48		
50			
60			
16	38	50	120
	40		
	42		
	45		
	48		
	50		
	60		
70			

Z	D	H	d
17	38	50	120
	40		
	42		
	45		
	48		
	50		
	60		
18	38	50	120
	40		
	42		
	45		
	48		
	50		
	60		
	65		
70			
19	38	50	120
	40		
	42		
	45		
	48		
	50		
	60		
65			
70			
20	38	50	120
	40		
	42		
	45		
	48		
	50		
	60		
65			
70			