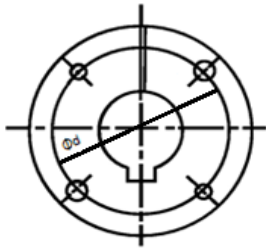


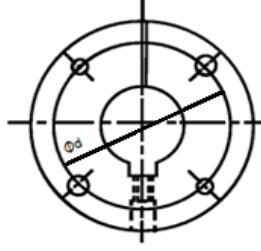
QD BUSHINGS



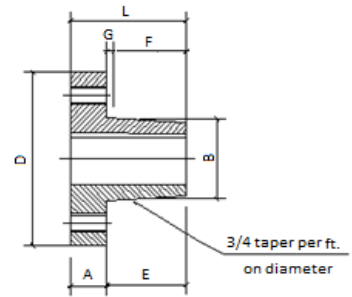
Size 'H'



Size 'JA' to 'J'



Size 'M' to 'S'



BUSHING	DIMENSION(INCHES)							Φd Bolt circle	Cap Screws Required	Set screws	Max bore	
	A	B	D	E	F	G	L				inch	mm
H	0.250	1.625	2.500	1.000	0.875	0.125	1.250	2	2-1/4x3/4	10-24	1.25	30
JA	0.375	1.375	2.000	0.688	0.563	0.125	1.000	1.665	3 -10 x 1	10-24	1.25	23
SH	0.438	1.871	2.688	0.875	0.813	0.125	1.250	2.250	3 -1/4 x 1-3/8	1/4-20	1.69	36
SDS	0.500	2.187	3.188	0.875	0.750	0.125	1.375	2.688	3 -1/4 x 1-3/8	1/4-20	2.00	42
SD	0.500	2.187	3.188	0.938	1.250	0.125	1.813	2.688	3 -1/4 x 1-7/8	1/4-20	1.94	42
SK	0.563	2.812	3.875	1.375	1.250	0.125	1.125	3.313	3 - 5/16 x 2	5/16-18	2.50	56
SF	0.563	3.125	4.625	1.500	1.250	0.125	2.000	3.875	3-3/8 x2	5/16-18	2.32	63
E	0.750	3.834	6.000	1.875	1.625	0.125	2.625	5.000	3 - 1/2 x 2-3/4	3/8-16	3.50	78
F	0.813	4.437	6.625	2.813	2.500	0.188	3.625	5.625	3 - 9/16 x 3-5/8	1/2-13	3.94	90
J	1.000	5.148	7.250	3.500	3.188	0.188	4.500	6.250	3 - 5/8 x 4-1/2	5/8-11	4.50	105
M	1.250	6.500	9.000	5.500	5.188	0.188	6.750	7.875	4 - 3/4 x 6-3/4	3/4-10	5.50	130
N	1.500	7.000	10.250	6.625	6.250	0.250	8.125	8.500	4 - 7/8 x 8-1/2	3/4-10	6.00	140
P	1.750	8.250	11.750	7.625	7.250	0.250	9.375	10.000	4 - 1 x 9-1/2	7/8-9	7.00	160
W	2.000	10.437	15.000	9.375	9.000	0.250	11.375	12.750	4 - 1-1/8 x 1-11/2	1-8	8.50	200
S	3.250	12.125	17.750	12.500	12.000	0.375	15.750	15.000	5 - 1-1/4 x 15-1/2	1-1/4-7	10.00	240



QD BUSHINGS (Bore & keyway information)

H bushings	Standard bore	Relevant keyway	SDS bushings	Standard bore	Relevant keyway	SK bushings	Standard bore	Relevant keyway
H	7/16	no keyway	SDS	7/16	no keyway	SK	7/16	no keyway
	1/2	1/8 x 1/16		1/2	1/8 x 1/16		1/2	1/8 x 1/16
	9/16	1/8 x 1/16		9/16	1/8 x 1/16		9/16	1/8 x 1/16
	5/8	3/16 x 3/32		5/8	3/16 x 3/32		5/8	3/16 x 3/32
	11/16	3/16 x 3/32		11/16	3/16 x 3/32		11/16	3/16 x 3/32
	3/4	3/16 x 3/32		3/4	3/16 x 3/32		3/4	3/16 x 3/32
	13/16	3/16 x 3/32		13/16	3/16 x 3/32		13/16	3/16 x 3/32
	7/8	3/16 x 3/32		7/8	3/16 x 3/32		7/8	3/16 x 3/32
	15/16	1/4 x 1/8		15/16	1/4 x 1/8		15/16	1/4 x 1/8
	1	1/4 x 1/8		1	1/4 x 1/8		1	1/4 x 1/8
	1/1/16	1/4 x 1/8		1/1/16	1/4 x 1/8		1/1/16	1/4 x 1/8
	1-1/8	1/4 x 1/8		1-1/8	1/4 x 1/8		1-1/8	1/4 x 1/8
	1/3/16	1/4 x 1/8		1/3/16	1/4 x 1/8		1/3/16	1/4 x 1/8
	1-1/4	1/4 x 1/8		1-1/4	1/4 x 1/8		1-1/4	1/4 x 1/8
	1/5/16	5/16 x 1/16		1/5/16	5/16 x 5/32		1/5/16	5/16 x 5/32
	1-3/8	5/16 x 1/16		1-3/8	5/16 x 5/32		1/5/16	3/8 x 3/16
	1/7/16	3/8 x 1/16		1-3/8	3/8 x 3/16		1-3/8	5/16 x 5/32
1-1/2	3/8 x 1/16	1/7/16	3/8 x 3/16	1-3/8	3/8 x 3/16			
JA	1/2	no keyway	1-1/2	3/8 x 3/16	1/7/16	3/8 x 3/16		
	1/2	1/8 x 1/16	1/9/16	3/8 x 3/16	1-1/2	3/8 x 3/16		
	9/16	1/8 x 1/16	1-5/8	3/8 x 3/16	1/9/16	3/8 x 3/16		
	5/8	3/16 x 3/32	1/11/16	3/8 x 3/16	1-5/8	3/8 x 3/16		
	11/16	3/16 x 3/32	1-3/4	3/8 x 1/8	1/11/16	3/8 x 3/16		
	3/4	3/16 x 3/32	1/13/16	1/2 x 1/8	1-3/4	3/8 x 3/16		
	13/16	3/16 x 3/32	1-7/8	1/2 x 1/16	1-3/4	1/2 x 1/4		
	7/8	3/16 x 3/32	1/15/16	1/2 x 1/16	1/13/16	1/2 x 1/4		
	15/16	1/4 x 1/8	SD bushings	7/16	no keyway	1-7/8	1/2 x 1/4	
	1	1/4 x 1/8		1/2	1/8 x 1/16	2	1/2 x 1/4	
	1/1/16	1/4 x 1/16		9/16	1/8 x 1/16	2/1/16	1/2 x 1/4	
	1-1/8	1/4 x 1/16		5/8	3/16 x 3/32	2-1/8	1/2 x 1/4	
	1/3/16	1/4 x 1/16		11/16	3/16 x 3/32	2/3/16	1/2 x 1/8	
	1-1/4	1/4 x 1/32		3/4	3/16 x 3/32	2-1/4	1/2 x 1/8	
	SH	7/16		no keyway	13/16	3/16 x 3/32	2-1/4	5/8 x 1/8
		1/2		1/8 x 1/16	7/8	3/16 x 3/32	2/5/16	5/8 x 1/16
		9/16		1/8 x 1/16	15/16	1/4 x 1/8	2-3/8	5/8 x 1/16
5/8		3/16 x 3/32		1	1/4 x 1/8	2/7/16	5/8 x 1/16	
11/16		3/16 x 3/32		1/1/16	1/4 x 1/8	2-1/2	5/8 x 1/16	
3/4		3/16 x 3/32		1-1/8	1/4 x 1/8			
13/16		3/16 x 3/32		1/3/16	1/4 x 1/8			
7/8		3/16 x 3/32		1-1/4	1/4 x 1/8			
15/16		1/4 x 1/8		1/5/16	5/16 x 5/32			
1		1/4 x 1/8		1-3/8	5/16 x 5/32			
1/1/16		1/4 x 1/8		1-3/8	3/8 x 3/16			
1-1/8		1/4 x 1/8	1/7/16	3/8 x 3/16				
1/3/16		1/4 x 1/8	1-1/2	3/8 x 3/16				
1-1/4		1/4 x 1/8	1/9/16	3/8 x 3/16				
1/5/16		5/16 x 5/32	1-5/8	3/8 x 3/16				
1-3/8		5/16 x 5/32	1/11/16	3/8 x 3/16				
1/7/16		3/8 x 1/16	1-3/4	3/8 x 1/8				
1-1/2	3/8 x 1/16	1/13/16	1/2 x 1/8					
1/9/16	3/8 x 1/16	1-7/8	1/2 x 1/16					
1-5/8	3/8 x 1/16	1/15/16	1/2 x 1/16					



QD BUSHINGS (Bore & keyway information)

SF bushings	Standard bore	Relevant keyway	E bushings	Standard bore	Relevant keyway	F bushings	Standard bore	Relevant keyway	J bushing	Standard bore	Relevant keyway
SF	1/2	no keyway	E	7/8	no keyway	F	1	no keyway	J	1/7/16	no keyway
	1/2	1/8 x 1/16		1-3/16 1-	1/4 x 1/8		1-3/8	5/16 x 5/32		1/7/16	3/8 x 3/16
	5/8	3/16 x 3/32		1/7/16	3/8 x 3/16		1/7/16	3/8 x 3/16		1-1/2	3/8 x 3/16
	3/4	3/16 x 3/32		1-1/2	3/8 x 3/16		1-1/2	3/8 x 3/16		1/9/16	3/8 x 3/16
	7/8	3/16 x 3/32		1/9/16	3/8 x 3/16		1/9/16	3/8 x 3/16		1/11/16	3/8 x 3/16
	15/16	1/4 x 1/8		1-5/8	3/8 x 3/16		1-5/8	3/8 x 3/16		1-3/4	3/8 x 3/16
	1	1/4 x 1/8		1/11/16	3/8 x 3/16		1-3/4 1-7/8	3/8 x 3/16		1/2 x 1/4	1/2 x 1/4
	1/1/16	1/4 x 1/8		1-3/4	3/8 x 3/16		2-1/8	1/2 x 1/4		1/15/16	1/2 x 1/4
	1-1/8	1/4 x 1/8		1/13/16	1/2 x 1/4		2/3/16	1/2 x 1/4		2	1/2 x 1/4
	1/3/16	1/4 x 1/8		1-7/8	1/2 x 1/4		2-1/4	1/2 x 1/4		2-1/8	1/2 x 1/4
	1-1/4	1/4 x 1/8		1/15/16	1/2 x 1/4		2-1/4	5/8 x 5/16		2/3/16	5/8 x 5/16
	1/5/16	5/16 x 5/32		2	1/2 x 1/4		2/5/16	5/8 x 5/16		2-1/4	1/2 x 1/4
	1-3/8	5/16 x 5/32		2/1/16	1/2 x 1/4		2-3/8	5/8 x 5/16		2/5/16	5/8 x 5/16
	1-3/8	3/8 x 3/16		2-1/8	1/2 x 1/4		2/7/16	5/8 x 5/16		2-3/8	5/8 x 5/16
	1/7/16	3/8 x 3/16		2/3/16	1/2 x 1/4		2-1/2	5/8 x 5/16		2/7/16	5/8 x 5/16
	1-1/2	3/8 x 3/16		2-1/4	1/2 x 1/4		2/9/16	5/8 x 5/16		2-1/2	5/8 x 5/16
	1/9/16	3/8 x 3/16		2-1/4	5/8 x 5/16		2-5/8	5/8 x 5/16		2-1/2	5/8 x 5/16
	1-5/8	3/8 x 3/16		2/5/16	5/8 x 5/16		2/11/16	5/8 x 5/16		2-5/8	5/8 x 5/16
	1/11/16	3/8 x 3/16		2-3/8	5/8 x 5/16		2-3/4	5/8 x 5/16		2/11/16	5/8 x 5/16
	1-3/4	3/8 x 3/16		2/7/16	5/8 x 5/16		2-3/4	5/8 x 5/16		2-3/4	5/8 x 5/16
	1/13/16	1/2 x 1/4		2/13/16	3/4 x 3/8		2/13/16	3/4 x 3/8		2-7/8	3/4 x 3/8
	1-7/8	1/2 x 1/4		2-1/2	5/8 x 5/16		2-7/8	3/4 x 3/8		2-15/16	3/4 x 3/8
	1/15/16	1/2 x 1/4		2/9/16	5/8 x 5/16		2/15/16	3/4 x 3/8		3/5/16	7/8 x 7/16
	2	1/2 x 1/4		2-5/8	5/8 x 5/16		2-5/8	5/8 x 5/16		3-3/8	7/8 x 7/16
	2/1/16	1/2 x 1/4		2/11/16	5/8 x 5/16		2/11/16	5/8 x 5/16		3/7/16	7/8 x 7/16
	2-1/8	1/2 x 1/4		2-3/4	5/8 x 5/16		2-3/4	5/8 x 5/16		3-1/8	3/4 x 3/8
	2/3/16	1/2 x 1/4		2/13/16	3/4 x 3/8		2/13/16	3/4 x 3/8		3-1/4	3/4 x 3/8
	2-1/4	1/2 x 1/4		2-7/8	3/4 x 3/8		2-7/8	3/4 x 3/8		3-1/4	3/4 x 3/8
	2-1/4	5/8 x 5/16		2/15/16	3/4 x 1/8		2/15/16	3/4 x 1/8		3/5/16	7/8 x 3/16
	2/5/16	5/8 x 3/16		3	3/4 x 1/8		3	3/4 x 1/8		3-3/8	7/8 x 3/16
	2-3/8	5/8 x 3/16		3-1/8	3/4 x 1/8		3-1/8	3/4 x 1/8		3/7/16	7/8 x 3/16
	2/7/16	5/8 x 3/16		3/3/16	3/4 x 1/8		3/3/16	3/4 x 1/8		3-1/2	7/8 x 3/16
2-1/2	5/8 x 3/16	3-1/4	3/4 x 1/8	3-1/4	3/4 x 1/8	3-5/8	7/8 x 3/16				
2/9/16	5/8 x 1/16	3/5/16	7/8 x 1/16	3/5/16	7/8 x 1/16	3/11/16	7/8 x 3/16				
2-5/8	5/8 x 1/16	3-3/8	7/8 x 1/16	3-3/8	7/8 x 1/16	3-3/4	7/8 x 3/16				
2/11/16	5/8 x 1/16	3/7/16	7/8 x 1/16	3/7/16	7/8 x 1/16	3-7/8	1 x 1/8				
2-3/4	5/8 x 1/16	3-1/2	7/8 x 1/16	3-1/2	7/8 x 1/16	3/15/16	1 x 1/8				
2-7/8	3/4 x 1/16										
2/15/16	3/4 x 1/32										
								4	1 x 1/8		
								4-1/8	1 x 1/8		
								4/3/16	1 x 1/8		
								4-1/4	1 x 1/8		
								4-3/8	1 x 1/8		
								4/7/16	1 x 1/8		
								4-1/2	1 x 1/8		



QD BUSHINGS (Bore & keyway information)

M bushings	Standard bore	Relevant keyway	N bushings	Standard bore	Relevant keyway	P bushings	Standard bore	Relevant keyway
M	1/15/16	1/2 x 1/4	N	2/15/16	3/4 x 3/8	P	2/15/16	3/4 x 3/8
	2	1/2 x 1/4		3	3/4 x 3/8		3-1/4	3/4 x 3/8
	2/3/16	1/2 x 1/4		3-3/8	7/8 x 7/16		3/7/16	7/8 x 7/16
	2-1/4	1/2 x 1/4		3/7/16	7/8 x 7/16		3-1/2	7/8 x 7/16
	2-3/8	5/8 x 5/16		3-1/2	7/8 x 7/16		3-5/8	7/8 x 7/16
	2/7/16	5/8 x 5/16		3-5/8	7/8 x 7/16		3-3/4	7/8 x 7/16
	2-1/2	5/8 x 5/16		3-3/4	7/8 x 7/16		3-7/8	1 x 1/2
	2-5/8	5/8 x 5/16		3-7/8	1 x 1/2		3/15/16	1 x 1/2
	2/11/16	5/8 x 5/16		3/15/16	1 x 1/2		4	1 x 1/2
	2-3/4	5/8 x 5/16		4	1 x 1/2		4-1/4	1 x 1/2
	2-7/8	3/4 x 3/8		4/3/16	1 x 1/2		4-3/8	1 x 1/2
	2/15/16	3/4 x 3/8		4-1/4	1 x 1/2		4/7/16	1 x 1/2
	3	3/4 x 3/8		4-3/8	1 x 1/2		4-1/2	1 x 1/2
	3-1/8	3/4 x 3/8		4/7/16	1 x 1/2		4-5/8	1-1/4 x 5/8
	3/3/16	3/4 x 3/8		4-1/2	1 x 1/2		4-3/4	1-1/4 x 5/8
	3-1/4	3/4 x 3/8		4-5/8	1-1/4 x 5/8		4-7/8	1-1/4 x 5/8
	3-3/8	7/8 x 7/16		4-3/4	1-1/4 x 5/8		4/15/16	1-1/4 x 5/8
	3/7/16	7/8 x 7/16		4-7/8	1-1/4 x 5/8		5	1-1/4 x 5/8
	3-1/2	7/8 x 7/16		4/15/16	1-1/4 x 5/8		5/3/16	1-1/4 x 5/8
	3-5/8	7/8 x 7/16		5	1-1/4 x 5/8		5-1/4	1-1/4 x 5/8
	3/11/16	7/8 x 7/16		5/3/16	1-1/4 x 1/4		5/5/16	1-1/4 x 5/8
	3-3/4	7/8 x 7/16		5/7/16	1-1/4 x 1/4		5-3/8	1-1/4 x 5/8
	3-7/8	1 x 1/2		5-1/2	1-1/4 x 1/4		5/7/16	1-1/4 x 5/8
	3/15/16	1 x 1/2		5-7/8	1-1/2 x 1/4		5/15/16	1-1/4 x 5/8
	4	1 x 1/2		5/15/16	1-1/2 x 1/8		5-1/2	1-1/4 x 5/8
	4-1/8	1 x 1/2					5-3/4	1-1/2 x 3/4
	4/3/16	1 x 1/2					5-7/8	1-1/2 x 3/4
	4-1/4	1 x 1/2					5/15/16	1-1/2 x 3/4
	4-3/8	1 x 1/2					6	1-1/2 x 1/4
	4/7/16	1 x 1/2					6/1/16	1-1/2 x 1/4
	4-1/2	1 x 1/2					6-1/4	1-1/2 x 1/4
	4/11/16	1-1/4 x 5/8					6/7/16	1-1/2 x 1/4
4-3/4	1-1/4 x 5/8			6-1/2	1-1/2 x 1/4			
4-7/8	1-1/4 x 1/4			6-3/4	1-3/4 x 1/8			
4/15/16	1-1/4 x 1/4			7	1-3/4 x 1/8			
5	1-1/4 x 1/4							
5/3/16	1-1/4 x 1/4							
5-1/4	1-1/4 x 1/4							
5/7/16	1-1/4 x 1/4							
5-1/2	1-1/4 x 1/4							

W	Standard bore	Relevant keyway
W	4-1/4	-
	4-7/8	-
	5-1/4	-
	5-7/8	-
	6-1/2	-
	7-1/4	-
	7-3/4	2 x 1/4
8-1/2	2 x 1/4	

S bushings	Standard bore	Relevant keyway
S	6	-
	8	-
	9	-